



STATE OF THE WATERWAY - 2017



U. S. PORT RANKINGS 2016 (by total tonnage)

(Millions of Short Tons – 2016 ACOE data)

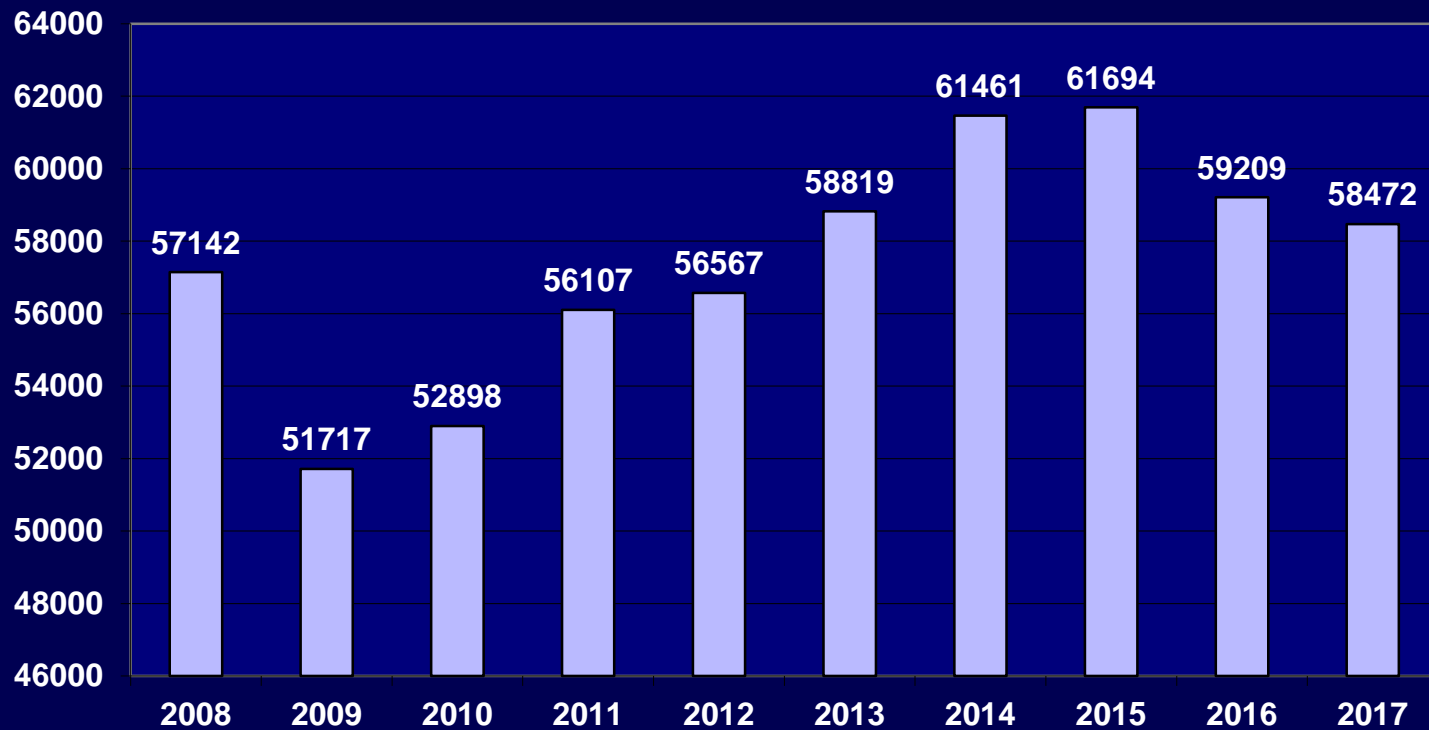


1	Port of S. Louisiana, LA	261.8	20	Port Arthur, TX	35.1
2	Houston, TX	247.9	21	St Louis, MO/IL	32.1
3	New York, NY and NJ	133.3	22	Duluth/Superior, MN/WI	30.2
4	New Orleans, LA	90.2	23	Valdez, AK	27.6
5	Beaumont, TX	84.5	24	Pascagoula, MS	26.8
6	Corpus Christi, TX	81.9	25	Tacoma, WA	25.7
7	Long Beach, CA	77.8	26	Richmond, CA	24.6
8	Baton Rouge, LA	72.9	27	Port Everglades, FL	24.2
9	Los Angeles, CA	62.6	28	Seattle, WA	24.2
10	Mobile, AL	58.0	29	Charleston, SC	23.0
11	Plaquemines, LA	56.7	30	Philadelphia, PA	22.9
12	Lake Charles, LA	56.0	31	Pittsburgh, PA	22.4
13	Port of Virginia	54.0	32	Portland, OR	20.4
14	Cincinnati-Northern, KY	43.0	33	Freeport, TX	19.6
15	Texas City, TX	41.2	34	Oakland, CA	19.0
16	Baltimore, MD	38.8	35	Jacksonville, FL	18.5
17	Huntington– Tristate	37.4	36	Paulsboro, NJ	18.4
18	Savannah, GA	36.4	37	Boston, MA	17.1
19	Tampa, FL	35.3	38	Chicago, IL	16.4

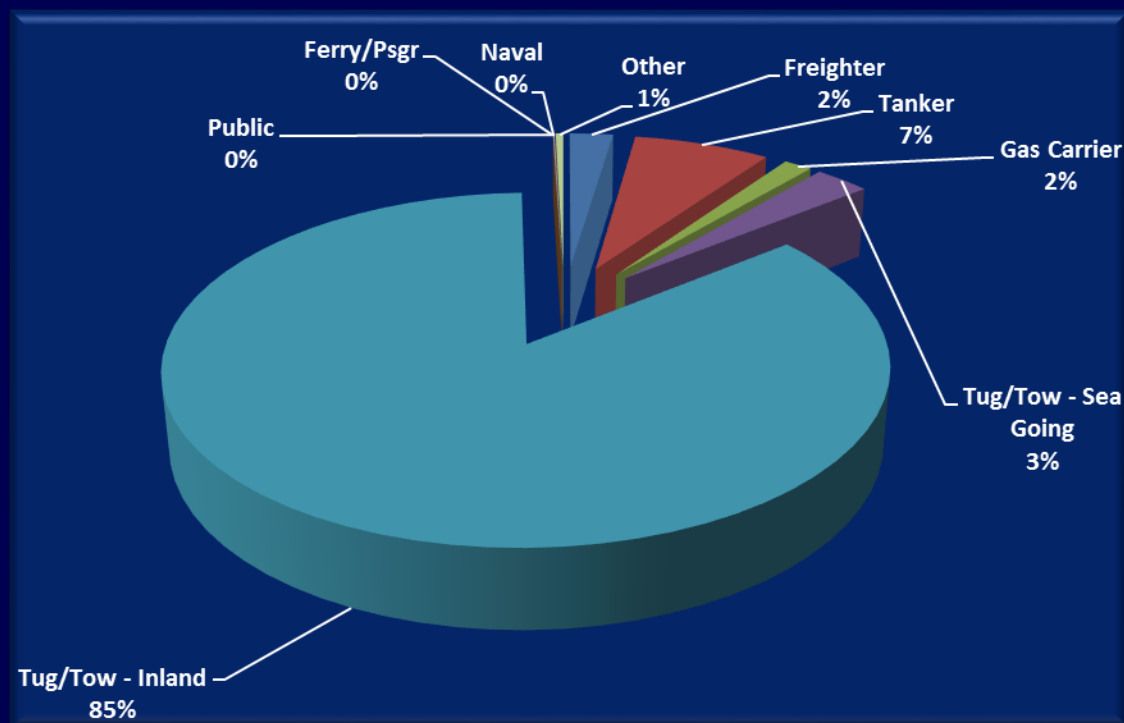
VTS Total Transits – 2017

	<u>2016</u>	<u>2017</u>	<u>%Change</u>
Tug / Tow	53,298	51,612	-0.03%
Tanker	3,770	4,310	+0.14%
Freighter	1,389	1,371	-0.01%
Gas	442	893	+102%
Other	<u>310</u>	<u>286</u>	<u>-0.08%</u>
Total	59,209	58,472	-0.01%

Total Transits 2008 – 2017



TRANSIT SUMMARY by Vessel Type – 2017



2017 TYPICAL DAY IN THE VTSA



	<u>Transits</u>
TANKER TRANSITS	11.8
FREIGHTER TRANSITS	3.8
TOW TRANSITS	141.4
GAS CARRIER	2.4
OSV / OTHER TRANSITS	0.8



INCIDENT SUMMARY – 2017

Incidents by Vessel Type:

12 Ship Incidents
21 Boat and Tow Incidents
5 FV
2 Misc.

40 Total

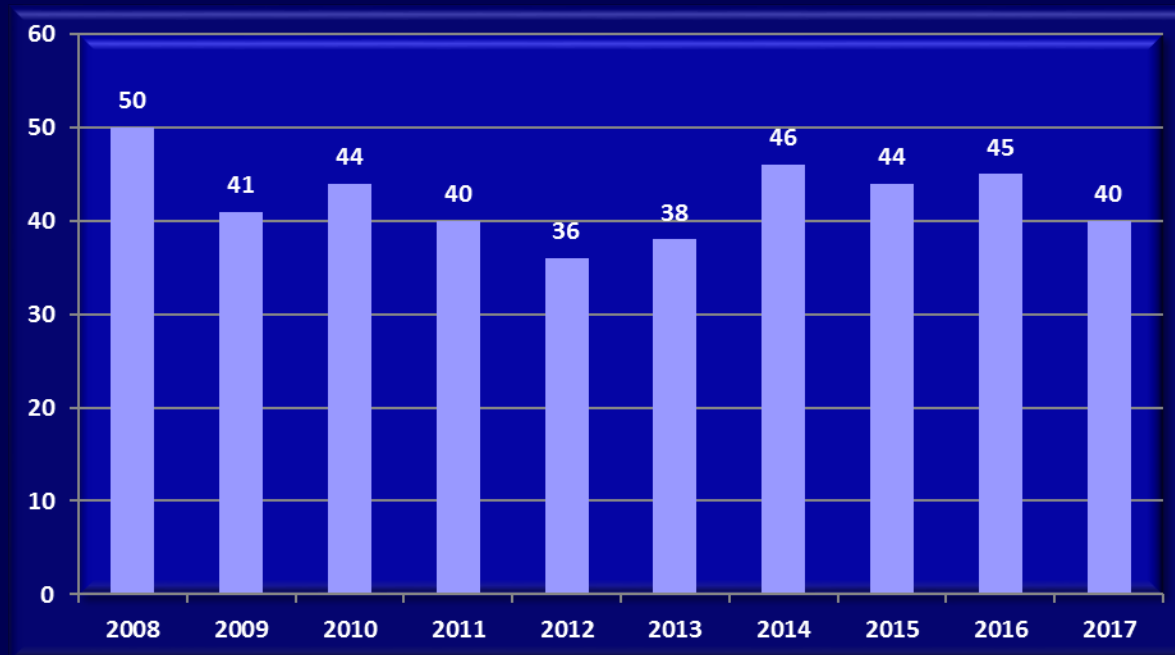
Incidents by Reported Cause:

5 COLLISIONS
10 ALLISIONS
11 GROUNDINGS
3 MECHANICAL FAILURES
11 MISCELLANEOUS

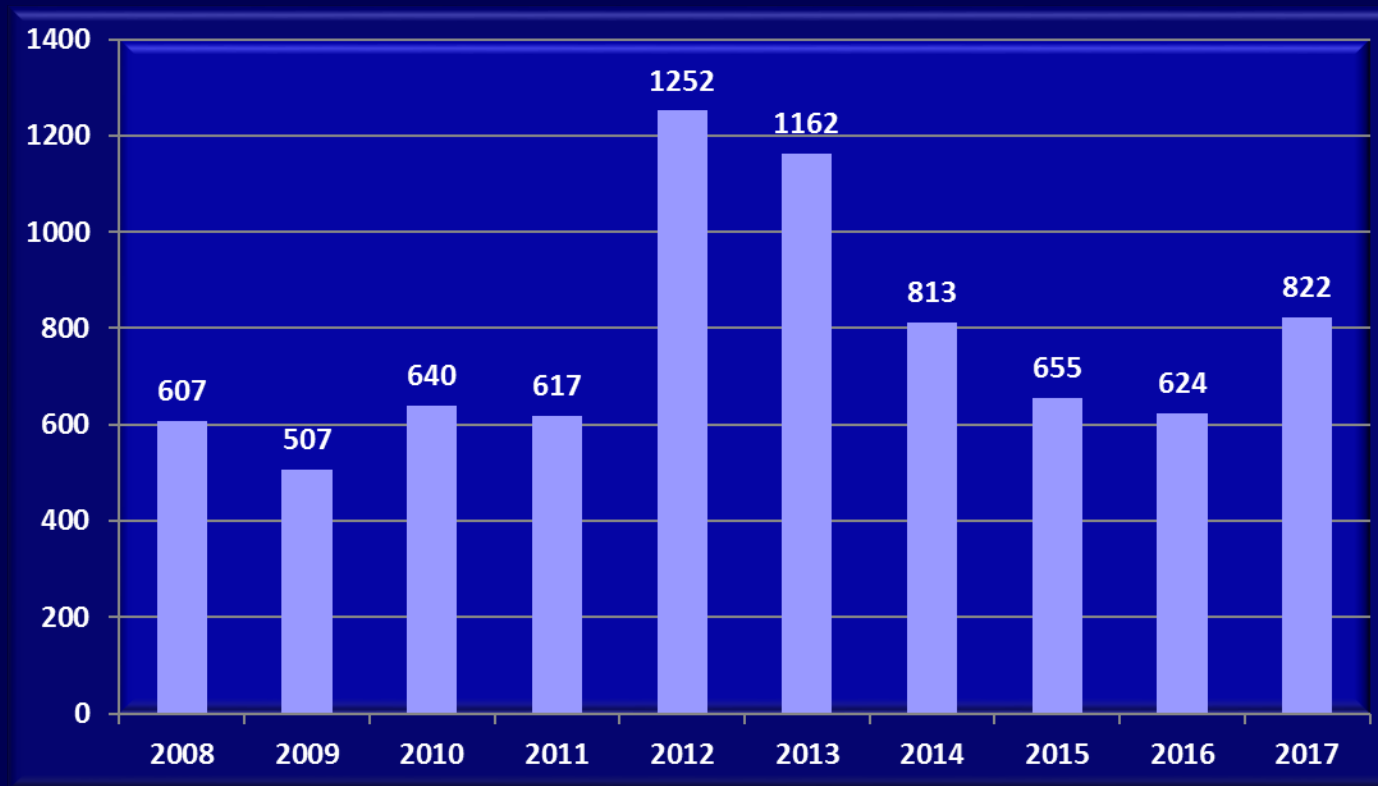
- 3 Wake Damage Complaints
- 4 Near Miss (all Ship / FV)
- 2 Breakaway
- 2 Fire at dock

40 Total

Total Incidents 2008-2017

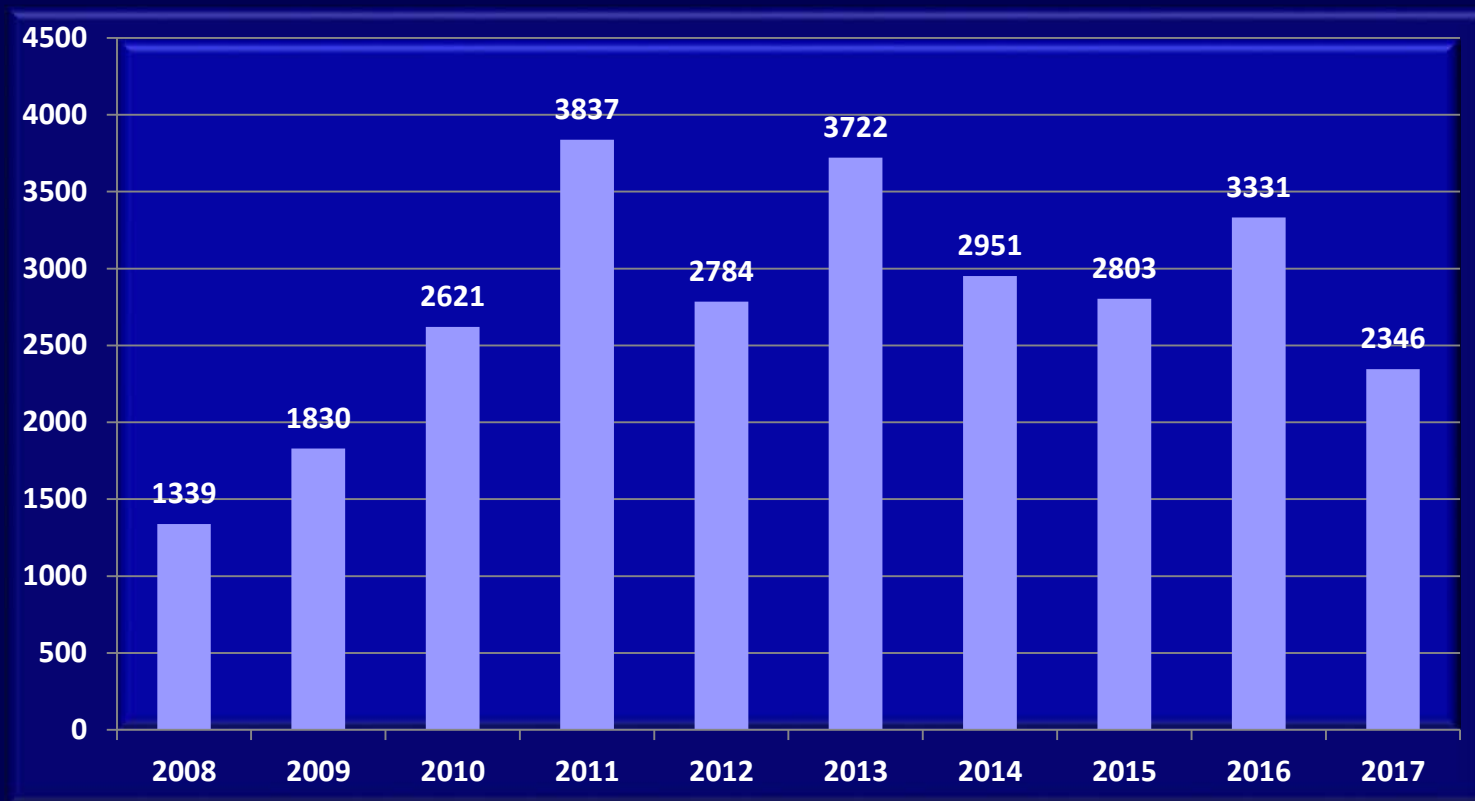


Ship Transits per Incident 2008-2017



Tow Transits per Incident 2008-2017

(Allisions, Collisions, Groundings and Wake Damages only)

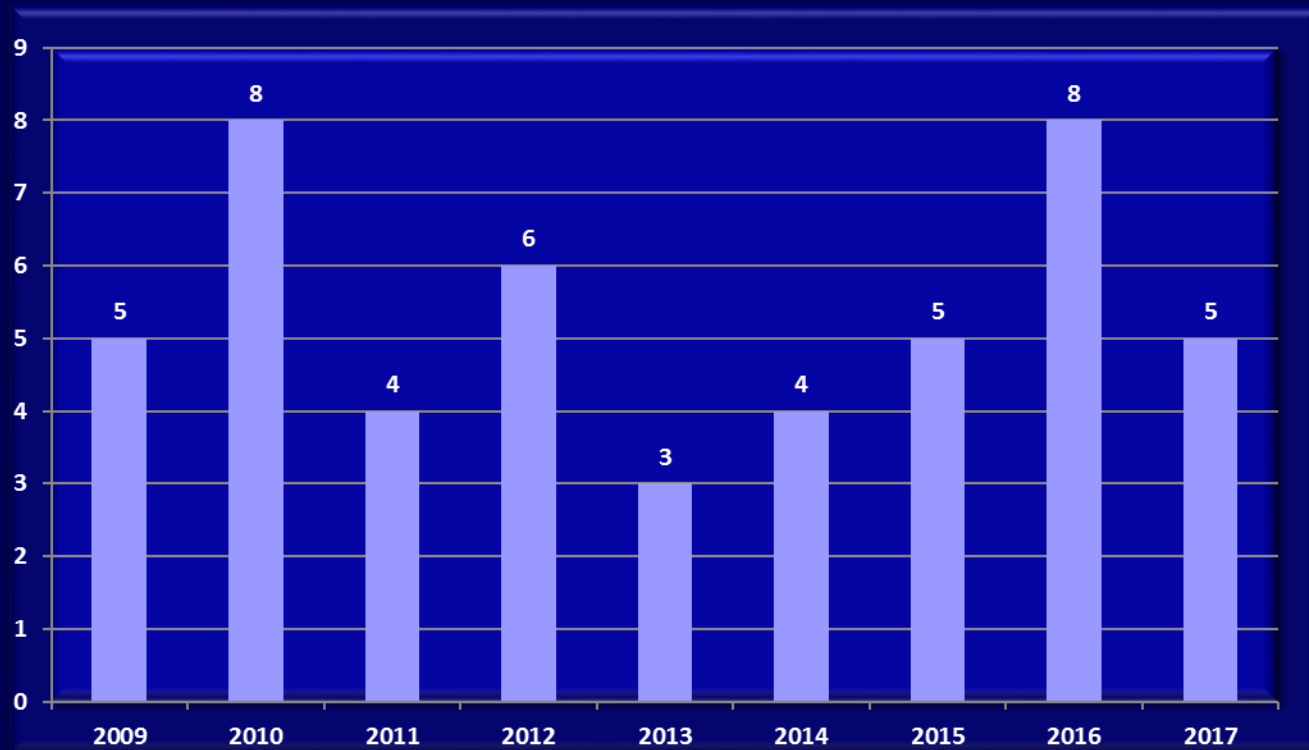


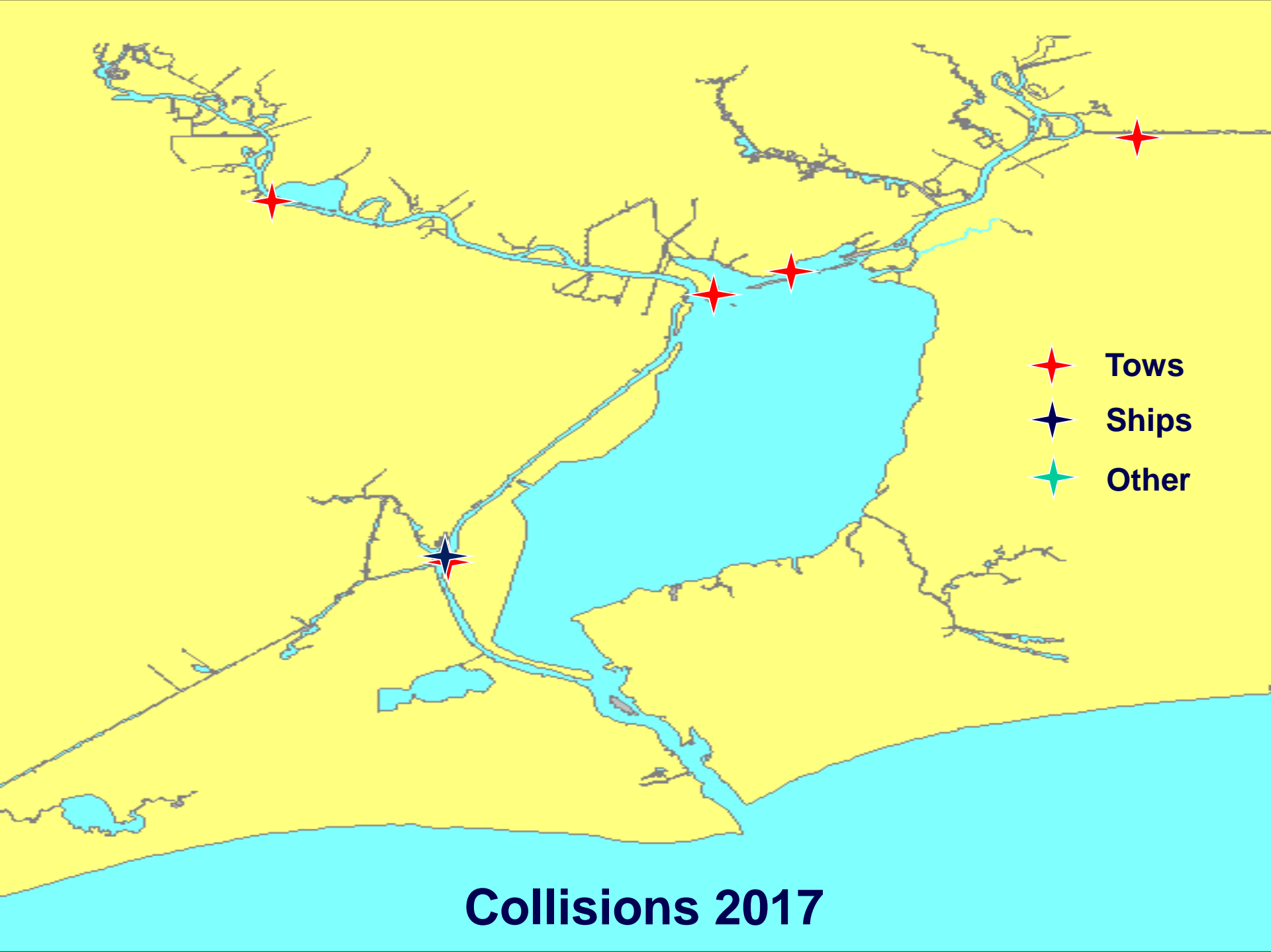
COLLISIONS



2017: 5 Total Collisions

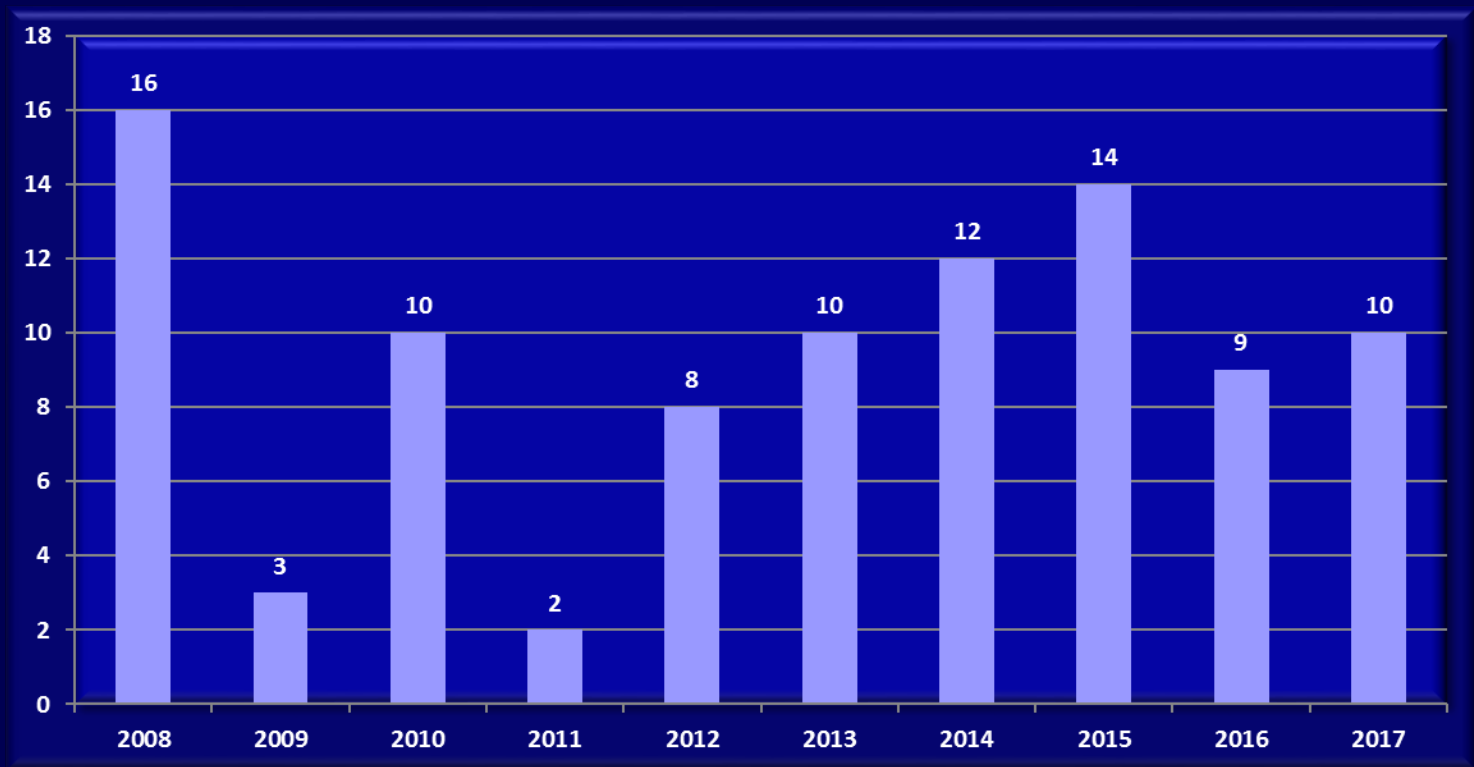
- **4 Tows**
- **1 Ship (+ Tow)**

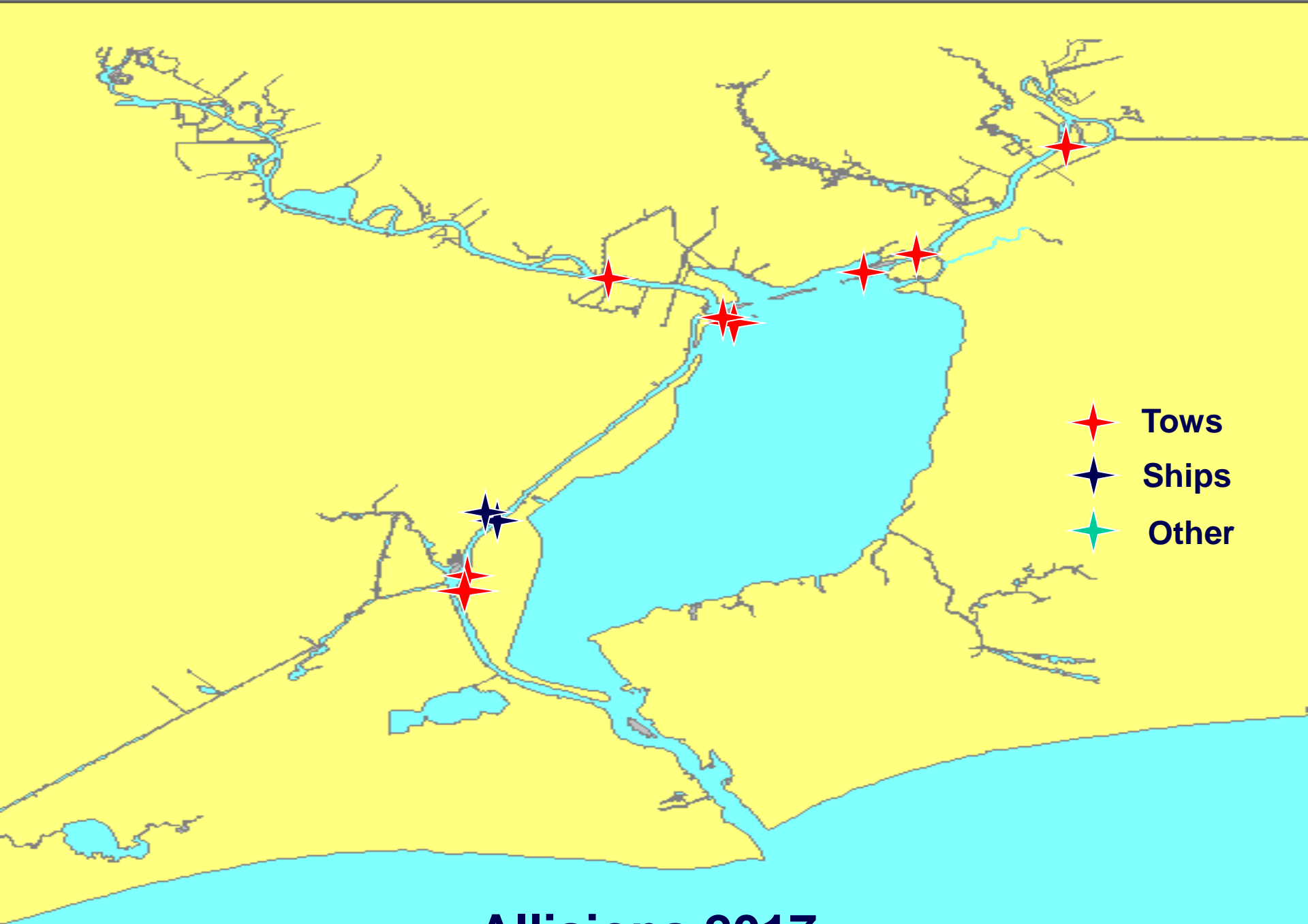




ALLISIONS

2017: 10 Total Allisions
8 Tows
2 Ships





Allisions 2017

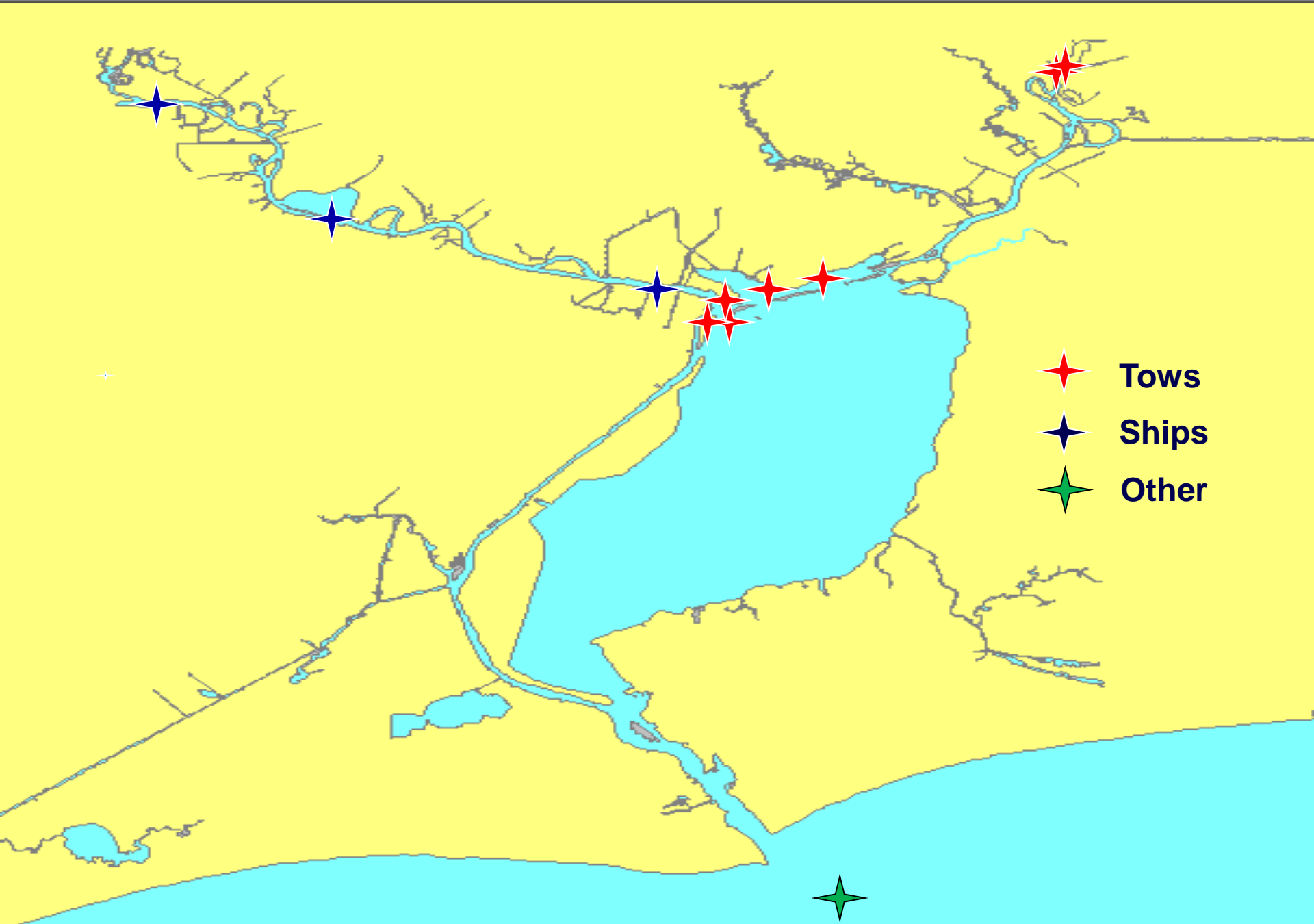
GROUNDINGS



2017: 11 Total Groundings

- **7 Tows**
- **3 Ships**
- **1 Other**

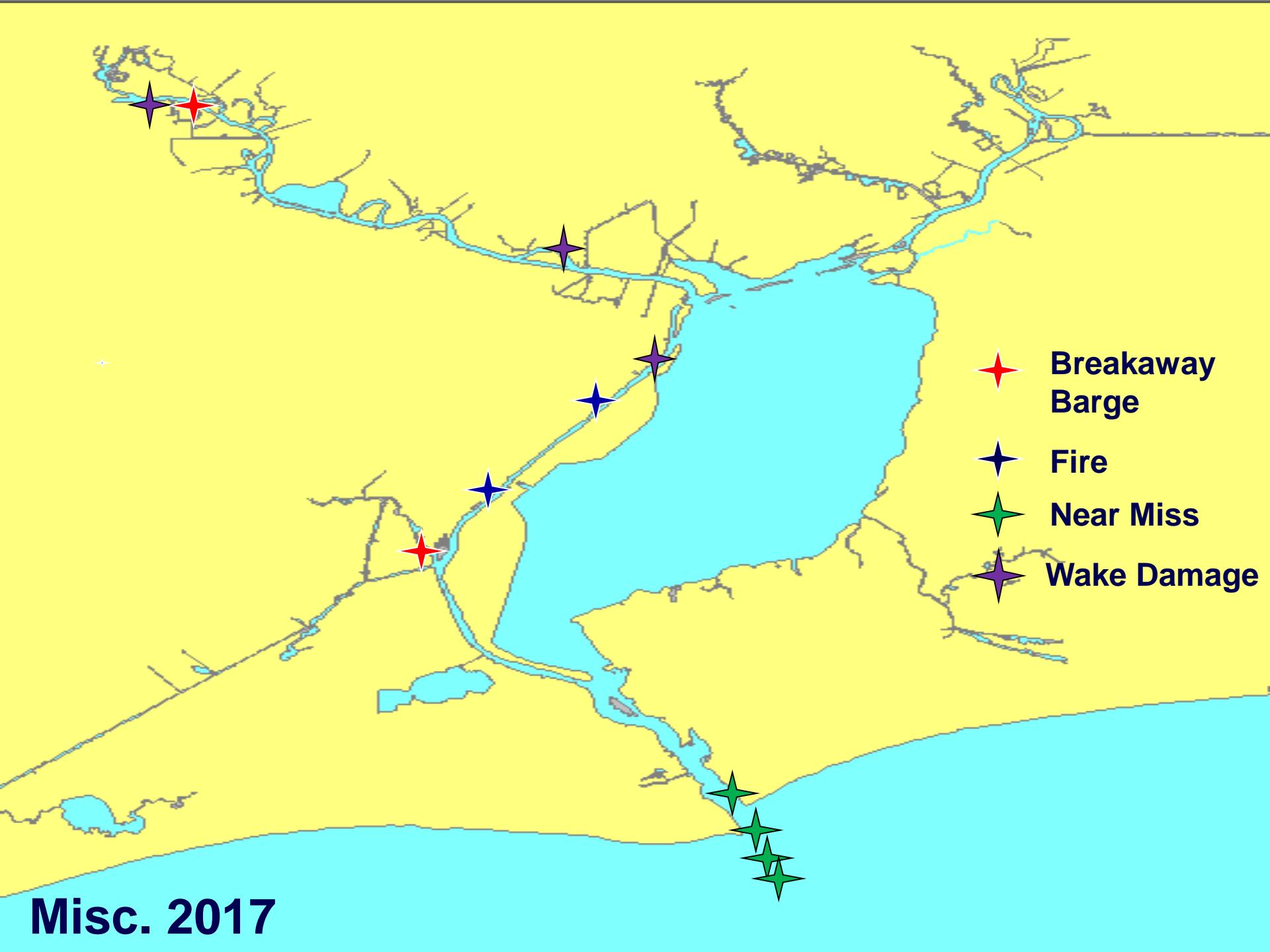




Groundings 2017

2017 INCIDENT HIGHLIGHTS

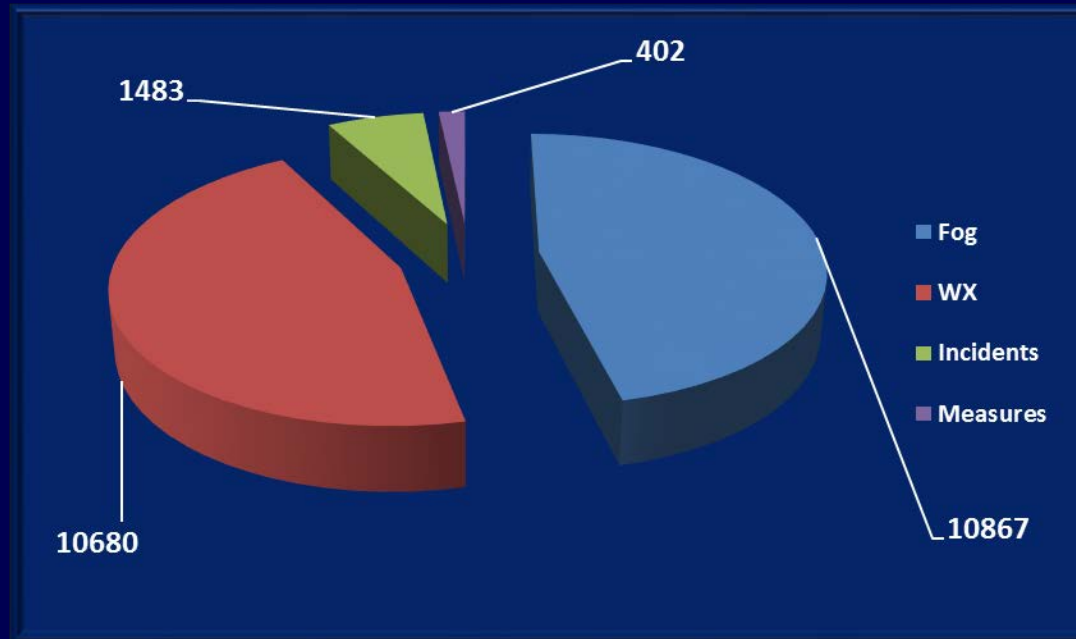
- 5 Breakaways/Wake Damage:
 - 3 Wake Damage (+8 Wake Complaints)
 - 2 Breakaways
- 7 ATON Knockdowns
- 4 Near Miss Situations:
 - Fishing Vessels impeding vessel and blocking channel
- 2 Grounding due to loading
- 2 Fires while moored at facilities



-  Breakaway Barge
-  Fire
-  Near Miss
-  Wake Damage

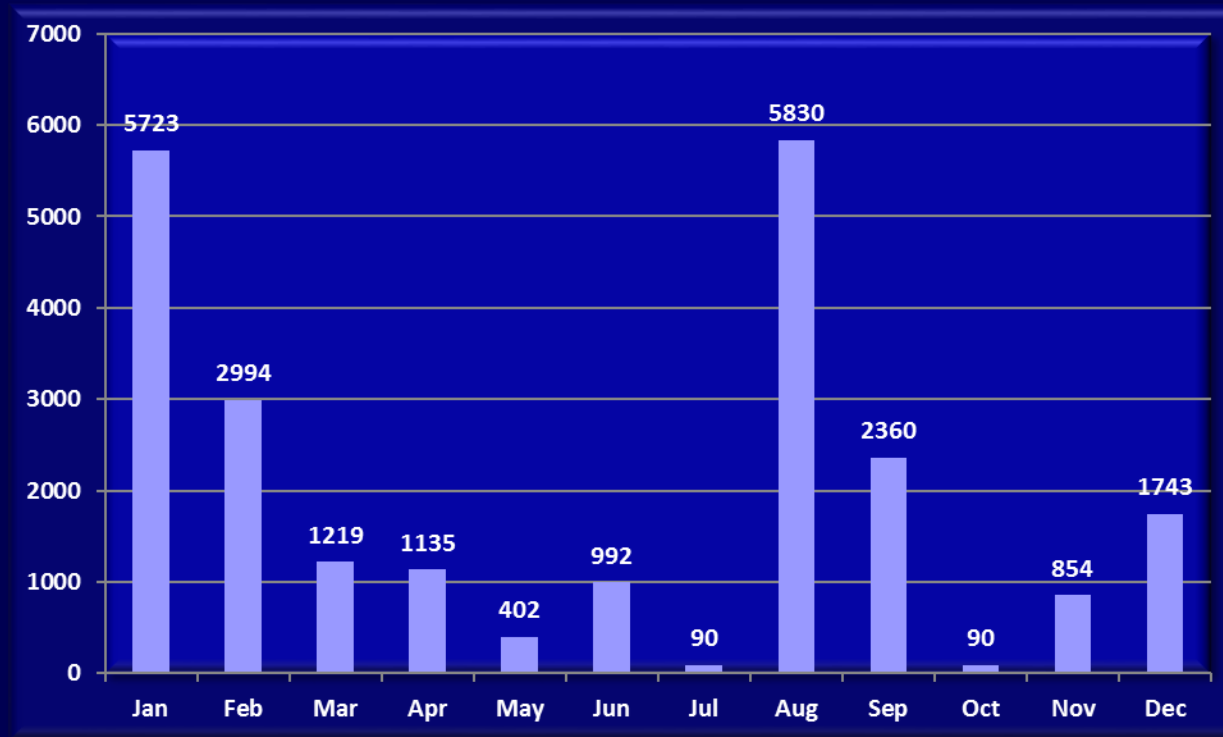
Misc. 2017

2017 Sabine-Neches Delays (in vessel hours)



2017

Total Vessel Delays by Month (in vessel hours)



2018 CHALLENGES



- **Planning for Deepening Project.**
- **Continued increases in ship traffic due to “Energy Renaissance.”**
- **Manage operations on waterway that affect vessel traffic; keep all stakeholders informed.**

VTS/WATERWAYS CONTACTS



- Scott Whalen, Director VTS Port Arthur
(409) 719-5086 Scott.K.Whalen@uscg.mil
- Doug Hendrix, VTS Port Arthur Operation and Training Manager
(409) 719-5083 Douglas.G.Hendrix2@uscg.mil
- Vessel Traffic Center, Watch Supervisor 24hrs
(409) 719-5070 msuportarthur-vtssup@uscg.mil
- VTS Webpage – www.uscg.mil/d8/vtsportarthur
- Homeport Website – <http://homeport.uscg.mil>



Mark Your Calendars

Upcoming SETWAC Meetings

Working Group Meeting

Thursday, April 12, 2018

10:00 am

Sabine-Neches Navigation District Office

Full Committee Meeting

Thursday, April 26, 2018

10:00 am

MSU Port Arthur