



Navigation Sub-Committee Report

Captain Charles LaHaye, Sabine Pilots





INCREASE IN VESSEL TRANSITS IN 2017

Total transits in 2016 5,692

Total transits in 2017 5,967 – an increase of 4.8%

First 9 months of 2017 averaged 474 transits per month

Last 3 months of 2017 averaged 566 transits per month (546/559/592) – an increase of 20%



HOW TO REDUCE UNNECESSARY DELAYS

Communication and accurate, timely estimates of sailing times will help dispatchers be more efficient with managing traffic. Whether the agent, terminal, or vessel itself keeps Vessel Dispatch updated on the estimated departure time, the more advance notice we can get the better we can plan.

Anticipate and plan for possible delays due to weather events.



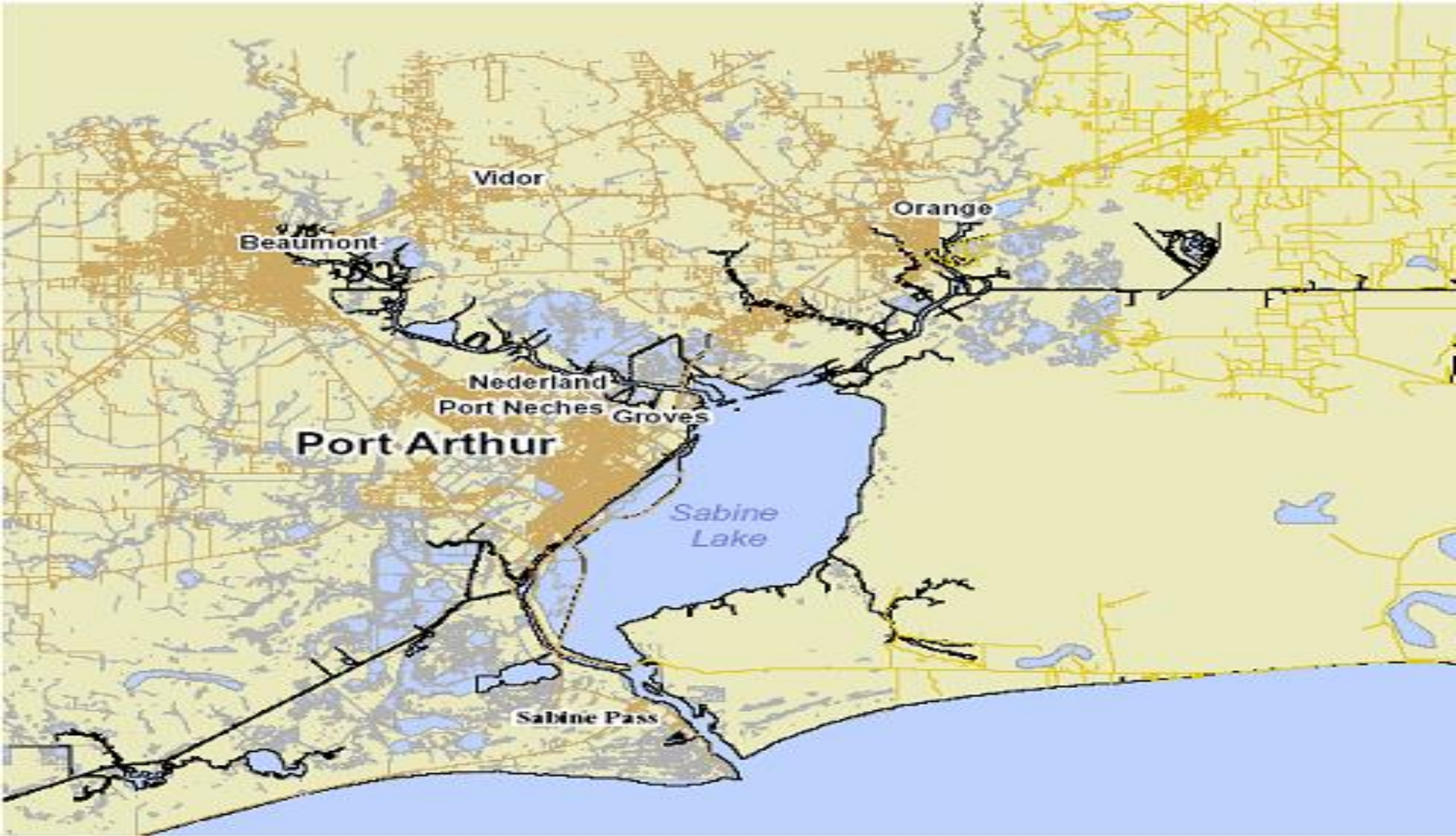
Port Welfare Sub-Committee Report
Southeast Texas Waterway Advisory Committee
Fr. Sinclair Oubre, Apostleship of the Sea



Lamar State College- Orange Courses



Nautical Institute Seminar on Seafarer Mental Health



**Waterway Maintenance and Improvement
Sub-Committee Report**
Randy Reese, Sabine-Neches Navigation District



UPDATE ON DEEPENING

Sabine-Neches Waterway

Operations and Maintenance Update

Steve T. Sherrill, PE
Resident Engineer

Belynda Kinman
Operations Manager

USACE – Galveston District

SETWAC Meeting
January 25, 2018



US Army Corps of Engineers
BUILDING STRONG®



FY 2017

Current Contracts

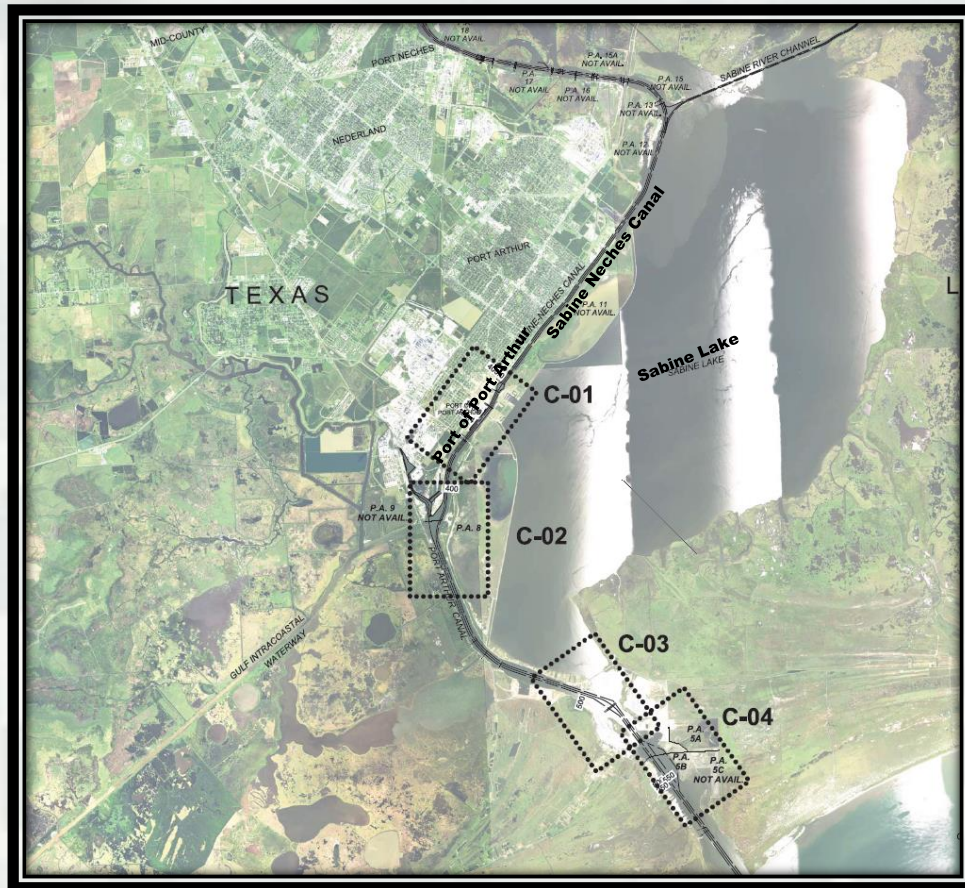
Sabine-Neches Waterway



BUILDING STRONG®



SABINE-NECHES WATERWAY MAINTENANCE DREDGING PIPELINE DREDGING



INLAND MARINE – currently working in the Junction Area

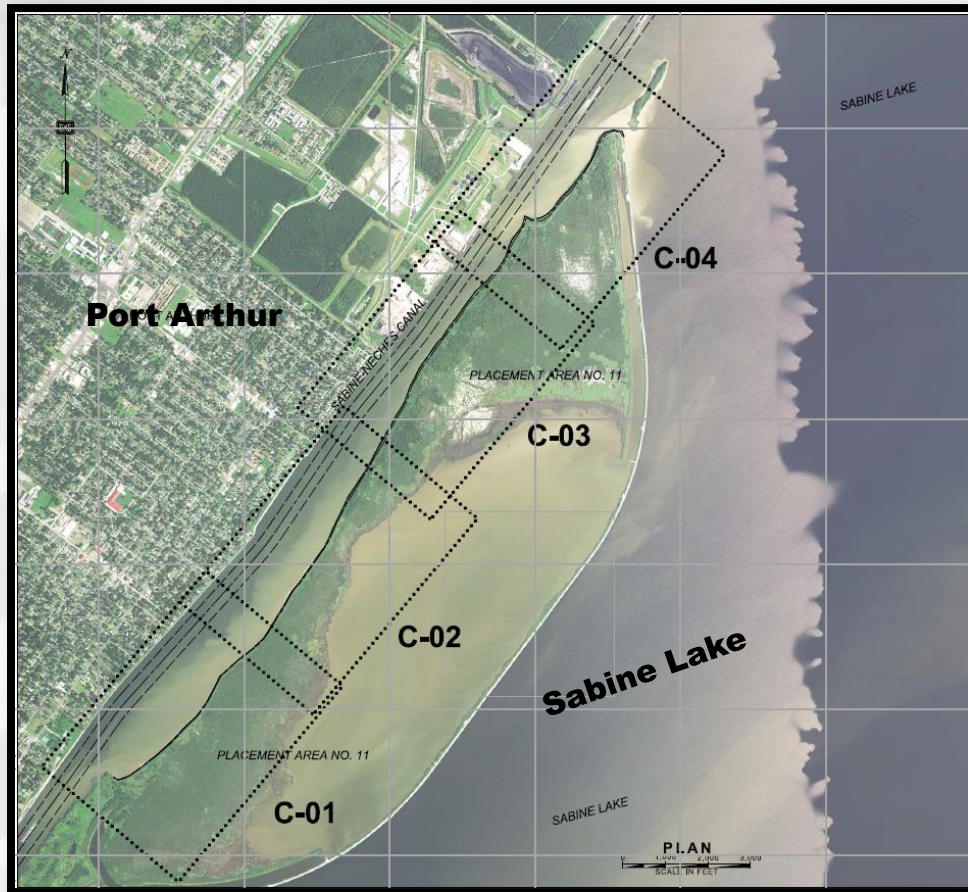
Project:	Sabine-Neches Waterway Maintenance Dredging Pipeline Dredge
Dredging Depth:	40 ft. Authorized Depth
Dredging Width:	400 - 900 ft.
Dredging Length:	Varies
Dredging Quantity:	Est. 3.15 MCYs
Material Type:	Silt/Clay
Placement Areas:	PA 5A, 8
Distance to Place Area:	1.5 - 2 Miles Avg.
Type of Equipment:	Pipeline
Env. Window:	NA
Reason for Window:	NA
Award:	29 September 2017



BUILDING STRONG®



SABINE-NECHES WATERWAY PA 11 SHORELINE STABILIZATION



Project:	PA 11 Shoreline Stabilization
Geotextile	38,500 SY
Riprap	26,500 TON
Semi-Compacted Berm Const.	21,500 CY
Clearing & Turfing	NA
Advertise	16 Jun 2017
Bid Open	25 Jul 2017
Award	16 Aug 2017

MIDWEST – Preliminary work underway. Experiencing weather delays



BUILDING STRONG®

FY 2018

Upcoming Contracts

Sabine-Neches Waterway



BUILDING STRONG®



SABINE-NECHES WATERWAY MAINTENANCE DREDGING



Project:	Sabine-Neches Waterway Maintenance Dredging
Dredging Depth:	40 ft. Authorized Depth
Dredging Width:	400ft.
Dredging Length:	Varies
Dredging Quantity:	Est. 2 MCYs
Material Type:	Silt
Placement Areas:	PA's 12,13, 17, & 18
Distance to Place Area:	1 - 2 Miles Avg.
Type of Equipment:	Pipeline Dredge
Env. Window:	NA
Reason for Window:	NA
Award:	28 June 2018



BUILDING STRONG®



SABINE-NECHES WATERWAY OUTER BAR AND BANK CHANNEL



Project:	Sabine-Neches Waterway Outer Bar & Bank
Dredging Depth:	42 ft. Authorized Depth
Dredging Width:	800ft.
Dredging Length:	Varies
Dredging Quantity:	Est. 2 MCYs
Material Type:	Silt
Placement Areas:	ODMDS 1 - 4
Distance to Place Area:	1 - 2 Miles Avg.
Type of Equipment:	Hopper
Env. Window:	NA
Reason for Window:	NA
Award:	28 June 2018



BUILDING STRONG®



SABINE-NECHES WATERWAY PLACEMENT AREA NO. 8 IMPROVEMENTS



Project:	Sabine-Neches Waterway Placement Area No. 8 Improvements
Type of Work:	Levee Improvements
Placement Area:	PA 8
Type of Equipment:	Excavators; Dozers; Marsh Buggy
Env. Window:	NA
Reason for Window:	NA
Award	06 August 2018

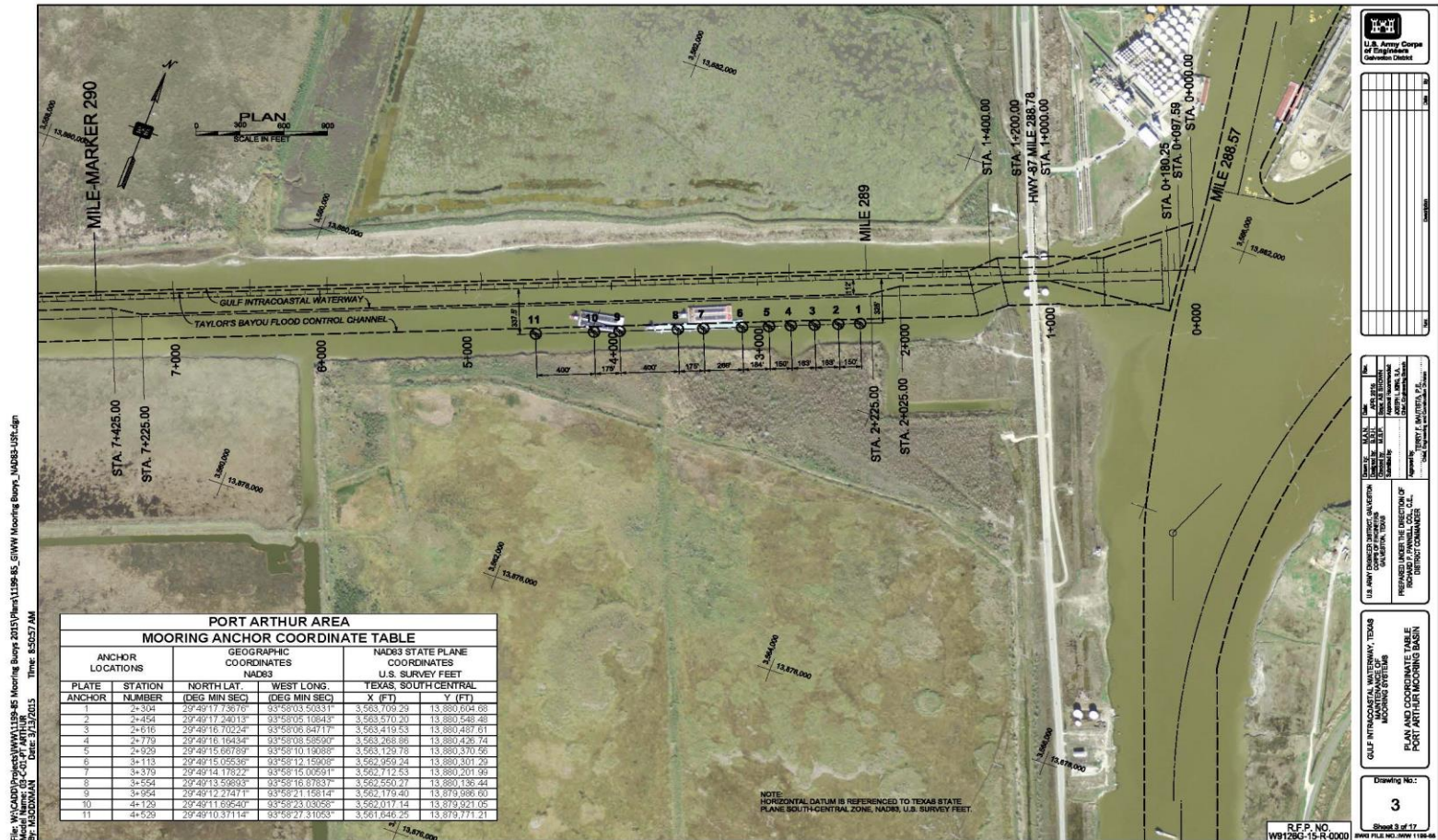


BUILDING STRONG®



SABINE-NECHES WATERWAY

Buoy Maintenance



Snell currently engaged elsewhere in the District
Anticipate arrival in SNWW February 2018 – Buoys ETA 29JAN18



BUILDING STRONG®



SABINE-NECHES WATERWAY PRIVATE INDUSTRY WORK

Applicant	REIN #	Placement Area	Estimated Cubic Yards	Notes
Valero PI	16-0070	PA 9	97,500	92,130 CY (Completed)
GT Logisitics	16-0098	PA 9	170,000	
Golden Pass	16-0057	PA 9	81,100	
	16-0056	PA 9	807,500	
	16-0058	PA 9	347,350	New Cut
Sunoco	17-0050	PA 23	68,000	
Total	17-0002	PA 16	30,000	
Kinder Morgan	17-0001	PA 16	10,000	
Motiva LLC	17-0001	PA 17	70,000	
Motiva-PA	17-0022	PA 9	160,000	
Premcor		PA 9	28,000	



BUILDING STRONG®

Pipeline Crossing Update



BUILDING STRONG®

Kinder Morgan – Sabine Pass Channel (242+28)



Current Status:

Dept. of Army Permit 6604 (AUG65)

Letter of Non-Compliance – 15DEC16

Response Received – 12JAN17

Follow on Survey Info Received – 25APR17

Way Ahead:

USACE Evaluating Data Provided

Preliminary Evaluation –
Depths appear OK
Possible exposure issue



BUILDING STRONG®

Colonial – Neches River (544+73.6)



Current Status:

Dept. of Army Permit 9438 (DEC75)

Letter of Non-Compliance – 15DEC16

Response Received – 07FEB17 with survey reports and updated drawings

Meeting was held 10APR17 to discuss documents provided.

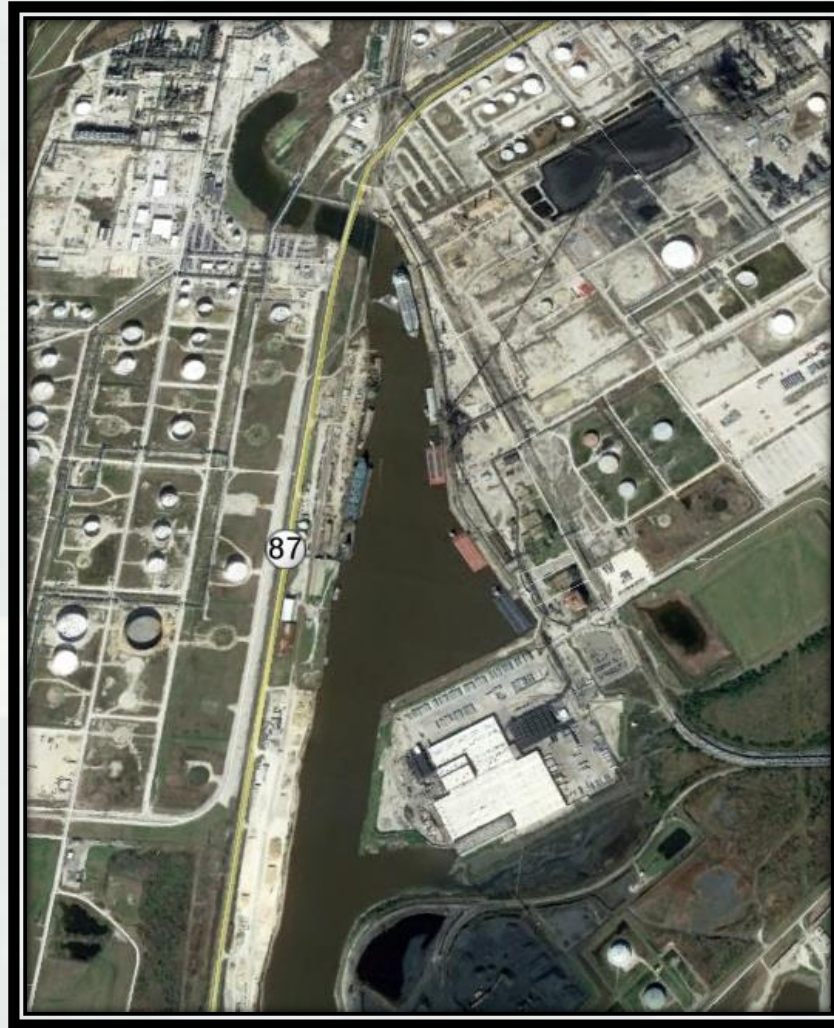
- 40" line shown in compliance
- 36" line has questions about cover

Way Ahead:

Issue being further researched by USACE

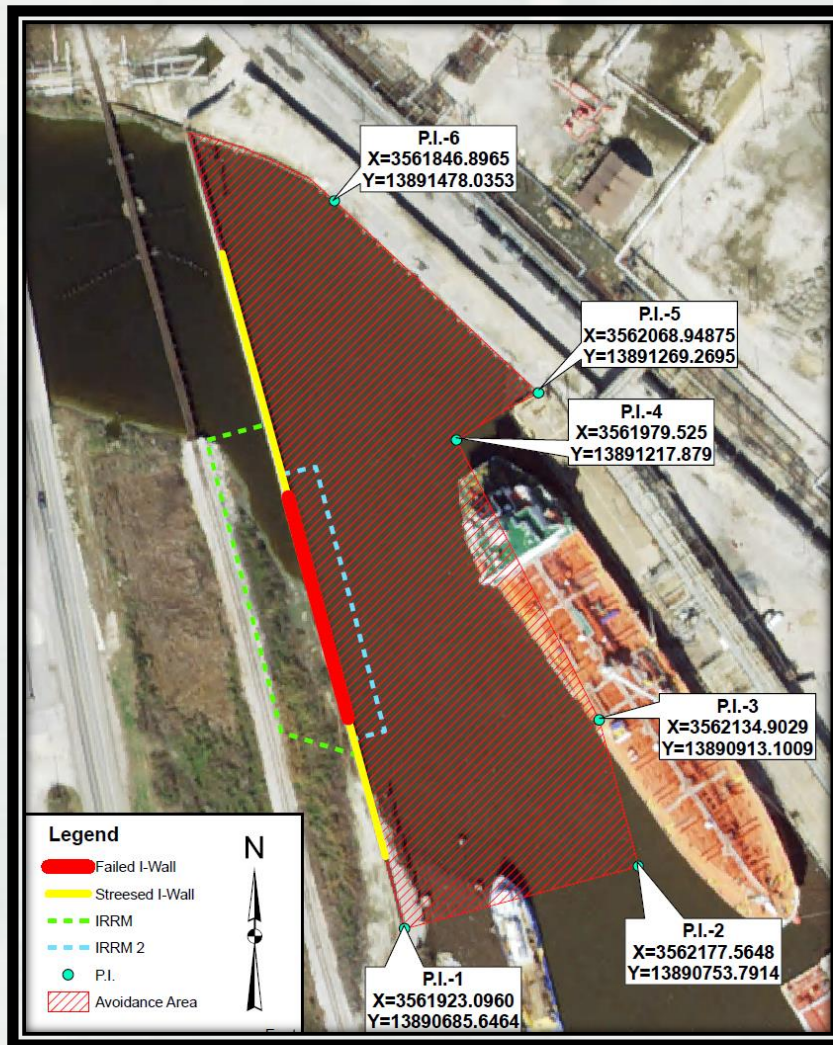


Taylors Bayou Update



BUILDING STRONG®

Taylors Bayou Current Restriction



Current Status:

- Vessel Traffic Allowed in Hatched Area shown in Figure with limitation put on tugs.
- Wall and temporary protection is being monitored by DD7 and USACE.



Questions?



Belynda Kinman
CESWG-OD-N
409-766-6323

Belynda.M.Kinman@usace.army.mil

Steve T. Sherrill, P.E.
CESWG-AO-NP
409-724-0176

steve.t.sherrill@usace.army.mil



BUILDING STRONG®

Waterway Security Sub-Committee Report





Upcoming AMSC Activities

ANT SABINE

ATON REPORT

Jan 2018



Damaged and Destroyed ATON



July 2017 – Jan 2018



- 23205 – Sabine River Daybeacon 21, Damaged
- 22475 – Sabine Pass Light 38, Destroyed
- 22990 – Sabine-Neches Canal Leading Light A, Destroyed
- 23000 – Sabine-Neches Canal Light 66, Destroyed
- 23395 – Neches River Light 26A, Destroyed
- 23455 – Neches River Light 40A, Damaged
- 23150 – Sabine River Daybeacon 13A, Damaged
- 23555 – Neches River Light 60, Destroyed
- 23000 – Sabine-Neches Canal Light 66, Destroyed
- 23110 – Sabine River Daybeacon 4, Destroyed

July 2017 – Jan 2018 (CON'T)



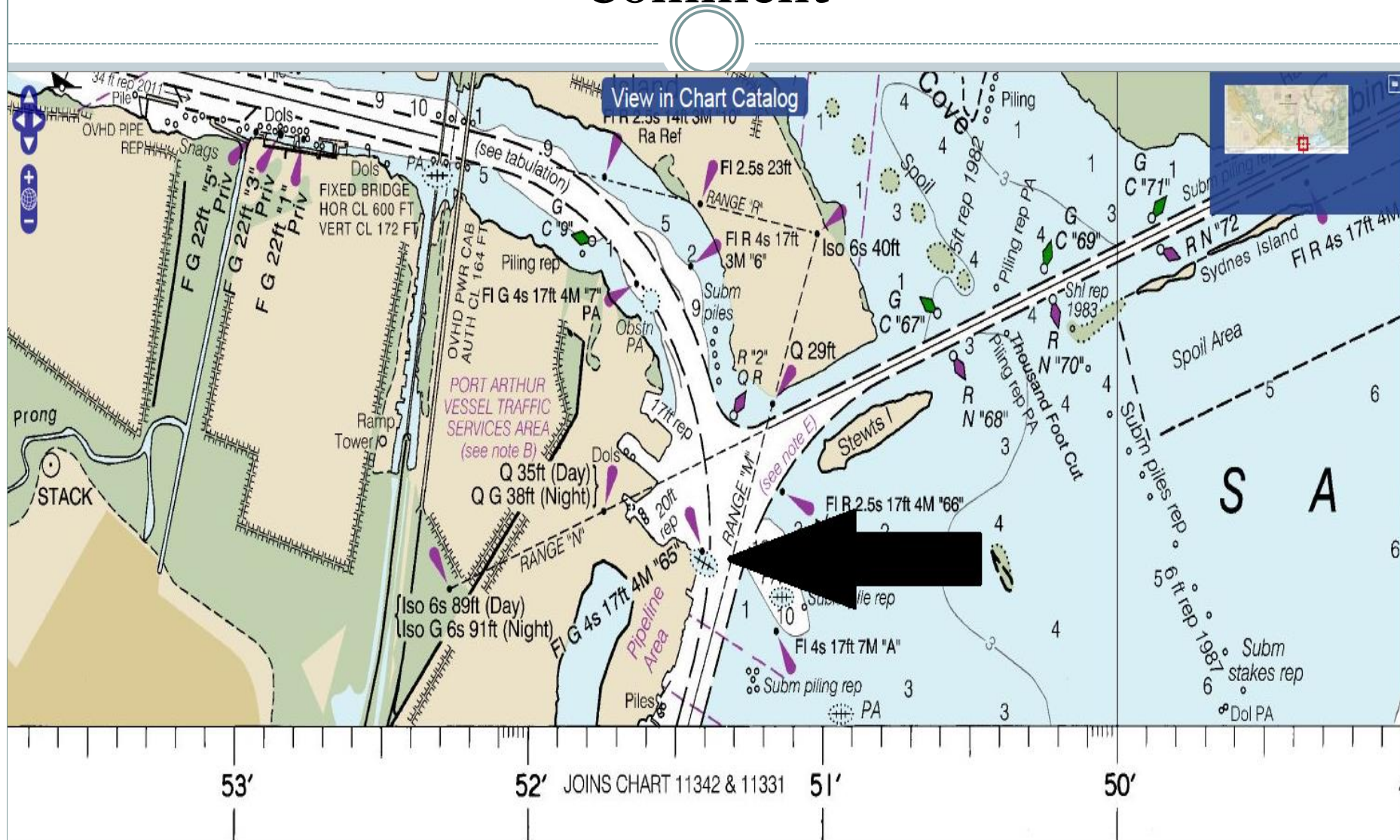
- 23135 – Sabine River Daybeacon 10, Destroyed
- 23205 – Sabine River Daybeacon 21, Destroyed
- 22385 – Sabine Bank Channel Lighted Buoy 22, Destroyed

Discontinue or relocate Sabine-Neches Canal Light 65



- TX – Sabine Pass and Lake– SABINE-NECHES CANAL
- To facilitate building a new pier system and industrial facility the Coast Guard is proposing the following Aid to Navigation change. Discontinue or relocate Sabine-Neches Canal Light 65 (LLNR-22995) in approximate position 29-57-57.250N/093-51-24.998W.
- Coast Guard completed a comprehensive review of the above project. Due expressed concerns from all users the CG will not Discontinue or relocate Sabine-Neches Canal Light 65.

Proposed Waterway Projects Closed for Public Comment



QUESTIONS/COMMENTS ?





SECURING AMERICA'S FUTURE THROUGH ENGINEERING

HBU
HOUSTON BAPTIST
UNIVERSITY

COLLEGE OF
ENGINEERING

Stan A. Napper, Ph.D.

Dean, College of Engineering

Houston Baptist University

snapper@hbu.edu

www.hbu.edu/engineering

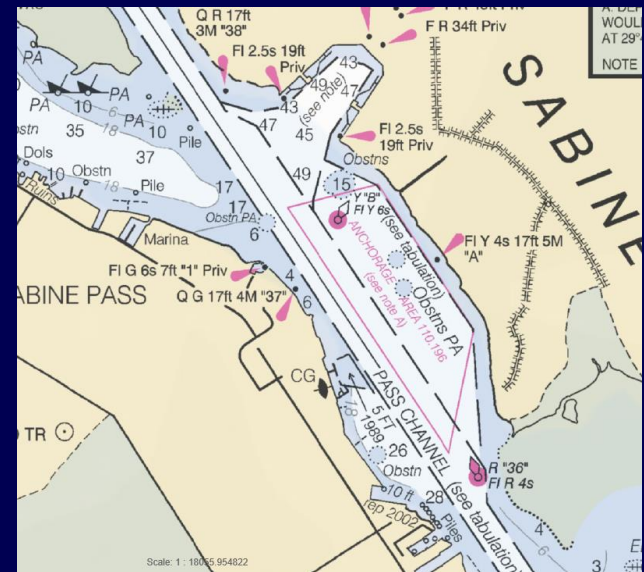


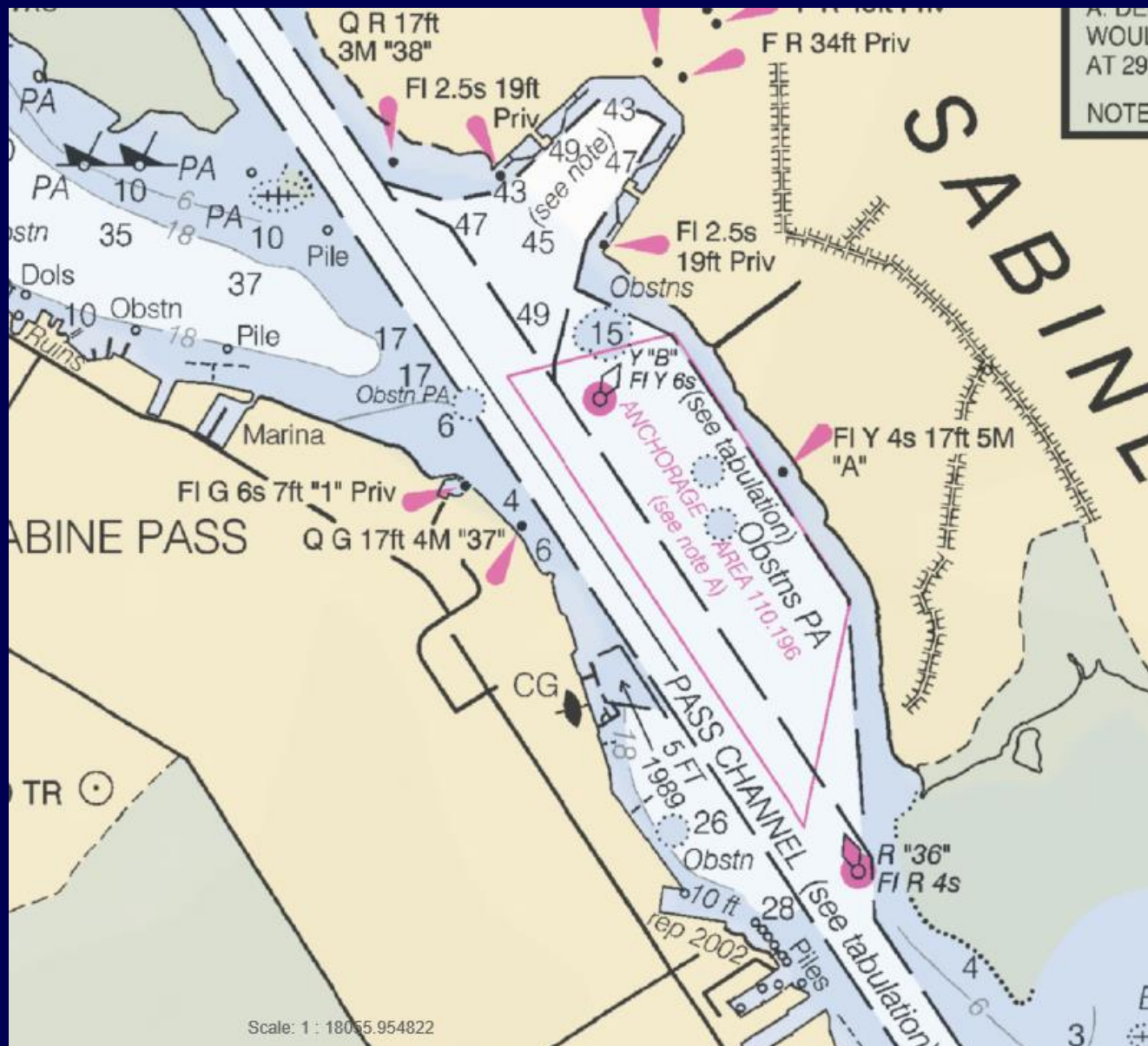
Brief Overview on Disestablishing Sabine Federal Anchorage

Sabine Federal Anchorage



- Request to disestablish
- Eighth Coast Guard District Authority
- Rulemaking Process (33 CFR 110.196)
 - NPRM
- HSC input







Sub M - Implementation





UTV Fleet of Responsibility



5,719





Compliance Dates

Existing towing vessels may continue to comply with 46 CFR subchapter C until July 20, 2018 unless a COI is issued earlier.

- One exception...Watertight & weathertight requirements detailed in 46 CFR 144.320 are effective July 20, 2016

Four-year phase in of COI requirements

- 25%, 50%, 75%, 100%
- If company only has 1 Towing Vessel, must have COI by July 20, 2020

Two Deferred Requirements NLT 5 years after COI date

- Pilothouse Alerter System
- Towing Machinery

New Towing Vessel must obtain a COI before it enters service

Keel laid or major conversion initiated on or after July 20, 2017



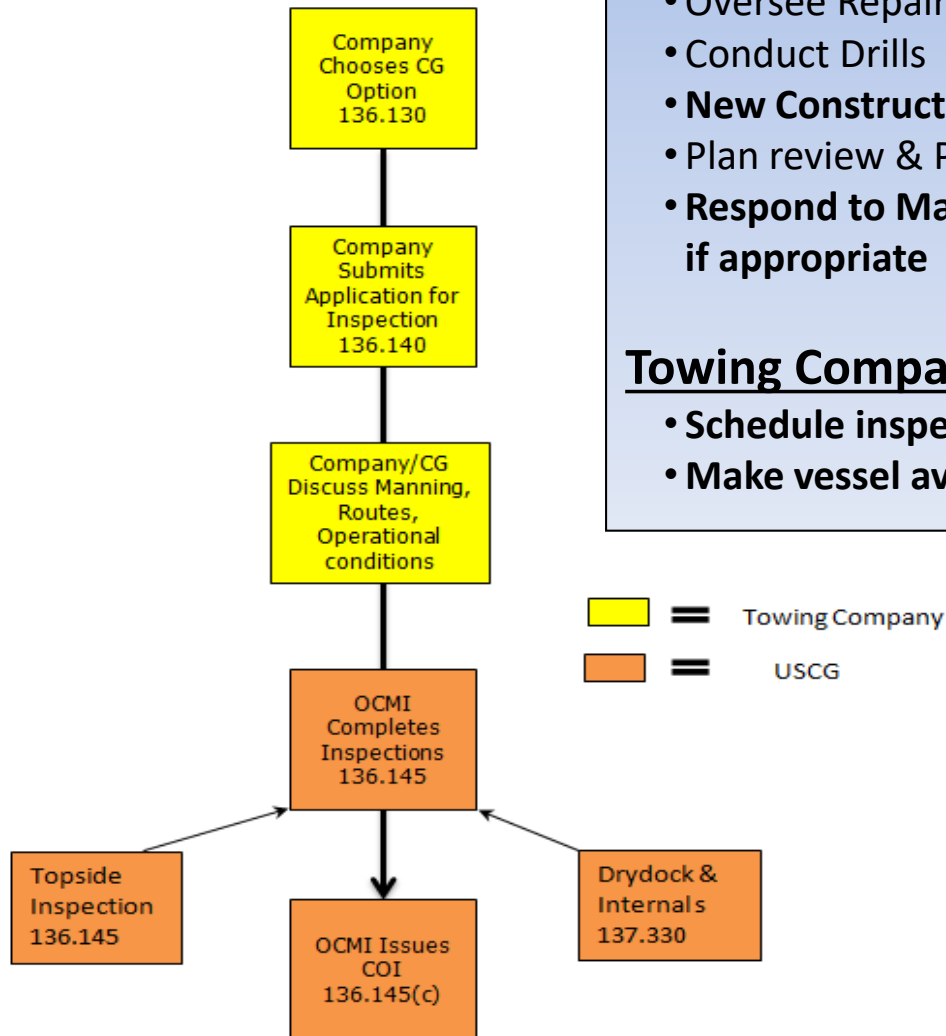
Sub M – Compliance Options

Options for certification of a towing vessel:

- 1. Coast Guard Option**
- 2. TSMS Option:**
 - a. External Survey Program
 - b. Internal Survey Program
- 3. ISM option – Recognized Classification Society (External/Internal)**



Initial Certification CG Option



Coast Guard Will:

- Issue COIs – set routes & manning
- Perform annual inspection
- Attend drydock & internal structural exams
- Issue deficiencies
- Oversee Repairs
- Conduct Drills
- **New Construction/Major modifications oversight**
- Plan review & P/E oversight (OCMI & MSC)
- **Respond to Marine Casualties – issue deficiencies/ enforcement if appropriate**

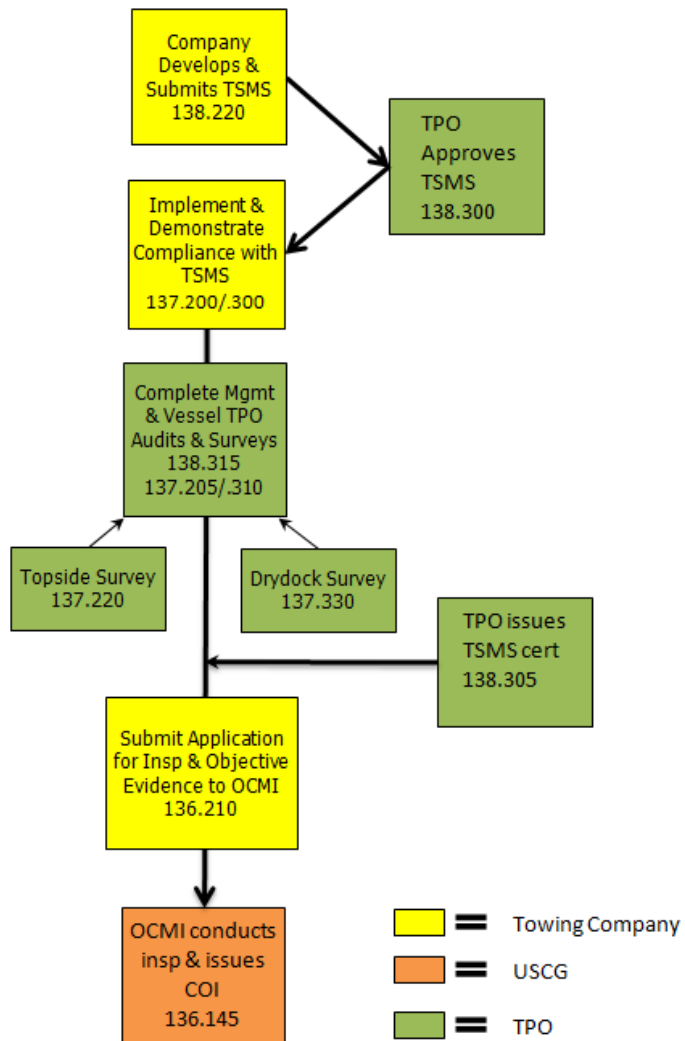
Towing Company Will:

- Schedule inspection/drydock/ISE with local OCMI
- Make vessel available for inspection





Initial Certification-TSMS Option External Survey Program



Approved Third Parties Will:

- Review/Approve/Oversee TSMS/ISM
 - **Issue TSMS Certificate** – valid for 5 yrs
- Survey/Audit
 - Mid-period & TSMS issuance Mgmt Audit
 - Annual Internal Mgmt Audit
 - Vessel Audit once every 5 yrs
 - Dry-dock/ISE & Annual Vessel Survey
 - New Construction/Major Mod Survey
- Issue non-conformities & clear deficiencies issued by CG
- Document compliance/Submit reports/Maintain records

Towing Company Will:

- **Develop/Implement SMS**
- Document compliance/Submit reports/Maintain records

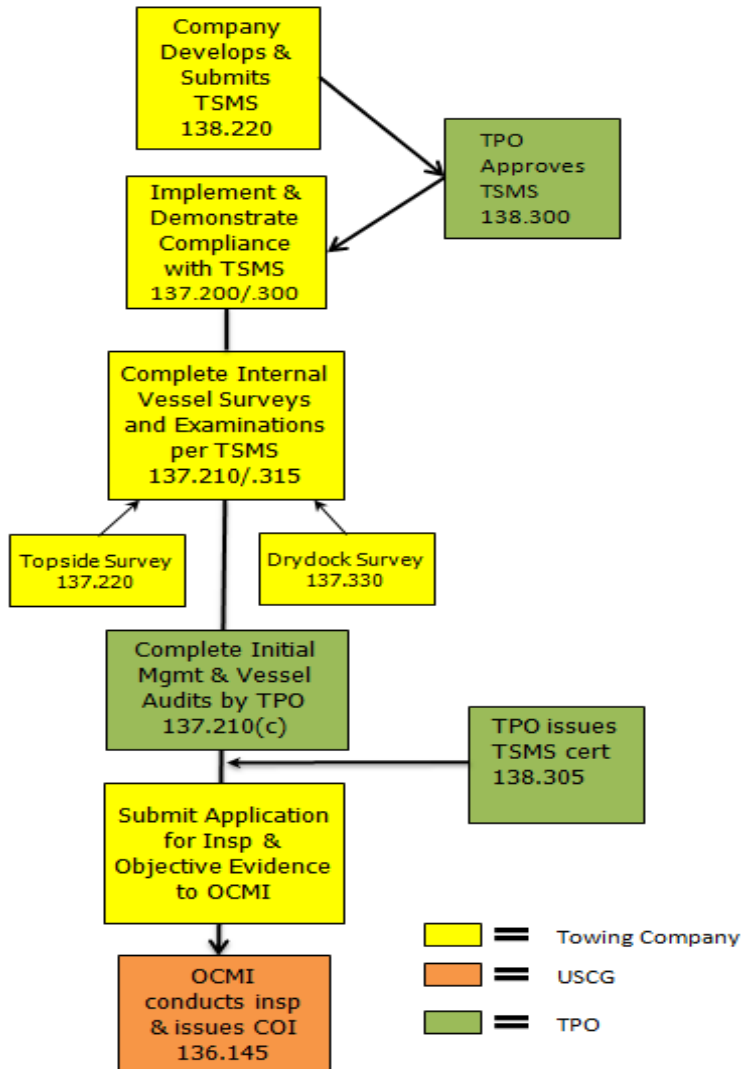
Coast Guard Will:

- **Issue COIs – set routes & manning**
 - Review objective evidence/report(s) at COI
- **Targeted exam** – May attend annual survey, dry-dock or major non-conformities
- Respond to Marine Casualties – issue deficiencies, enforcement if appropriate
- Direct vessel and/or company audits as needed
- NCOE review TPO reports.
- Appeals





Initial Certification- TSMS Option Internal Survey Program



Approved Third Parties Will:

- Review/Approve/Oversee TSMS
 - Issue TSMS Certificate
- Plan review & P/E oversight*
- Audit Companies & Vessels
 - Mid-period & TSMS issuance Mgmt Audit
 - Vessel Audit once every 5 yrs
- Oversee Company Internal Survey Program
- Issue non-conformities & clear deficiencies issued by CG
- Document compliance/Submit required reports/Maintain records

Towing Company Will:

- Develop/Implement SMS
- Survey /Audit
 - Dry-dock/ISE & Annual Vessel Survey
 - Annual internal management TSMS audits
- Document compliance/Submit required reports/Maintain records

Coast Guard Will:

- Same as TSMS External Survey Option





Initial COI

6 Months Before COI Inspection (If utilizing TSMS)

If TSMS & company complies w/requirements, TPO audits management & vessel*. TPO issues company TSMS Certificate.

Company maintains list of vessels under TSMS Certificate.



3 Months Before COI Inspection

Company schedules initial COI inspection with OCMI.



30 Days Before COI Inspection

Company submits Application for Inspection to OCMI.

TSMS Vessels also submit Objective evidence to OCMI per 136.210 and 137.202.



Initial COI Inspection Conducted by U.S. Coast Guard and a COI is issued.

*Vessels external audit may be conducted 6 months after the COI if the vessel has been owned for less than 6 months



Coast Guard to start issuing COIs under Subchapter M TSMS option

- To obtain a COI, the owner or managing operator of the towing vessel should follow the steps outlined in [46 CFR 136.210](#).
 - The local Officer in Charge, Marine Inspection (OCMI) may, as resources permit, issue a COI based upon an onboard inspection or a valid Uninspected Towing Vessel (UTV) decal as provided in [CG-CVC Policy Letter 17-01](#).
-
- The Coast Guard is not yet issuing COIs to vessels choosing the Coast Guard inspection option in Subchapter M.
 - An announcement will be made on Maritime Commons if the Coast Guard is ready to issue COIs before July 20, 2018. In the meantime, vessel owners and managing operators intending to utilize the Coast Guard inspection option may submit [Form CG-3752](#), "Application for Inspection of U.S. Vessel," to the cognizant OCMI and begin to schedule inspections between July 20, 2018 and July 22, 2019.

*Vessels external audit may be conducted 6 months after the COI if the vessel has been owned for less than 6 months



Coast Guard to start issuing COIs under Subchapter M TSMS option

§136.210 Obtaining or renewing a COI.

Owners and managing operators must submit Form CG-3752, "Application for Inspection of U.S. Vessel," to the cognizant OCMI where the inspection will take place. The owner or managing operator must submit the application at least 30 days before the vessel will undergo the initial inspection for certification. The owner or managing operator must schedule an inspection for this initial certification with the cognizant OCMI at least 3 months before the vessel is to undergo the inspection for certification.

(a) In addition to Form CG-3752, the owner or managing operator must submit:

(1) For initial certification:

(i) Vessel particular information; and

(ii) Number of persons in addition to the crew, if requested; or

(2) For a renewal of certification:

(i) Any changes to the information in paragraph (a)(1) of this section; and

(ii) A description of any modifications to the vessel.

(b) In addition to Form CG-3752 and the requirements of paragraph (a) of this section, the owner or managing operator of vessels utilizing the TSMS option must submit:

(1) Objective evidence that the owner or managing operator and the vessel are **in compliance with the TSMS** requirements in part 138 of this subchapter; and

(2) Objective evidence that the vessel's **structure, stability, and essential systems comply** with the applicable requirements of this subchapter for the intended route and service. This objective evidence may be in the form of a **survey report issued by a TPO** or another form acceptable to the Coast Guard.

STATE OF THE WATERWAY - 2017



Mark Your Calendars

Upcoming SETWAC Meetings

Working Group Meeting

Thursday, April 12, 2018

10:00 am

Sabine-Neches Navigation District Office

Full Committee Meeting

Thursday, April 26, 2018

10:00 am

MSU Port Arthur